

Release Note

R&S[®] IQR20
R&S[®] IQR100

Firmware Version 1.04.006

Status: RELEASED

Date: 2011-12-05



Table of Contents

1	SCOPE	3
2	REVISION HISTORY	4
3	NEW FEATURES	5
4	INSTALLATION INSTRUCTIONS	6
5	ELIMINATED PROBLEMS.....	8
6	KNOWN PROBLEMS	9
7	CONTACTING CUSTOMER SUPPORT	11

1 Scope

This release note is a summary of IQR firmware version 1.04.006 . It contains important last minute information about this release.

2 Revision History

Date	Release Note Revision	Changes
2011-12-05	1.04.006	update and bug fix release
2011-07-04	1.03.001	update and bug fix release
2011-02-18	1.02.002	bug fix release
2011-01-19	1.02.001	update and bug fix release
2010-12-07	1.01.002	first customer firmware release

3 New Features

Version	Function
1.04.006	IQR-K1 : added IQR-K103 : added IQR-K101 : import and LAN drives added set bookmarks in recorder added goto bookmarks in player added info interface actions enhanced progress bar enhanced
1.03.001	IQR-K101 : Export and Archive functions to USB storage device added IQR-K102 : USB GPS navigation data (meta data) logger added progress bar added goto function added master / slave mode added resolution of player sample rate increased time display added
1.02.002	no new features
1.02.001	added DIG IQ Info Interface. The instrument name and serial number will be shown on successful detection at the "Source" (Recorder) or "Destination" (Player) block
1.01.002	first customer firmware release



Always use 1.03.001 or later versions for entering option keys

4 Installation instructions

To run the update from the first official firmware version 1.01.002, a special handling is needed. Please follow the instructions below.

To update from any newer versions, use the method via USB memory stick as described in the users manual.

NOTE : Always run “Update FPGA” from the IQR Main Menu after any SW update / downgrade

Instructions for updating 1.01.002 to a new version :

Preparation

- 1) copy the new FW file “Firmware_xx.yy.zz.iqr” to a USB memory stick
- 2) start the IQR
- 3) connect a mouse, a keyboard, and the USB memory stick to USB ports
- 4) wait until the IQR prompts you to run the update
- 5) Cancel this update dialog box
- 6) wait until the IQR firmware has started completely

Terminate the IQR Firmware

- 1) Press CTRL-ALT-DEL keys simultaneously
- 2) Click “Task Manager”
- 3) Select the “Applications” tab
- 4) End the application “STREAM”

Deinstall current FW manually

- 1) Click Start→Control Panel
- 2) Click “Add or remove programs”
- 3) browse to R&S IQR Firmware
- 4) click “Remove”
- 5) browse to R&S Software Platform ...
- 6) click “Remove”
- 7) close “Add or Remove Programs” and the “Control Panel”

delete Registry keys.

- 1) press Windows key and R simultaneously
- 2) enter “regedit”
- 3) browse to HKEY_LOCAL_MACHINE\SOFTWARE
- 4) delete Rohde&Schwarz key

unzip new firmware to D:\firmware

- 1) open the windows explorer (Windows key + E)
- 2) browse to the “Firmware_xx.yy.zz.iqr” file containing the new firmware to be installed now on the USB memory stick
- 3) copy “Firmware_xx.yy.zz.iqr” to D:\temp
- 4) rename the file on D:\temp to “Firmware_xx.yy.zz.zip”
- 5) double click “Firmware_xx.yy.zz.zip”
- 6) copy all files and folders to D:\firmware, overwrite existing files

install new firmware

- 1) go to IQRSW folder in D:\firmware
- 2) double click setup.exe. Answer all questions with the default answer, and accept the licence agreement
- 3) delete all files in D:\temp except the folder WPDNSE
- 4) remove the USB memory stick
- 5) browse to C:\Program Files\Rohde&Schwarz\IQRFirmware
- 6) run two times "IQRRegisterComponents.cmd" (two double clicks)

Installation finished. You may start the IQR Firmware by a double click on the Icon in the upper left corner of the desktop or reboot the instrument

5 Eliminated Problems

Version	Eliminated Problems
1.04.006	<ul style="list-style-type: none"> • free disk space now checked before installation starts • occasionally incomplete detection of source instruments at the DIG IQ input • export permissions occasionally wrong in file header
1.03.001	<ul style="list-style-type: none"> • If Player and Recorder file is the same, sample count and sample rate of next record was incorrect • Sine and rectangle ARB generator did not save resulting file correctly
1.02.002	<p>Record / Play</p> <ul style="list-style-type: none"> • If record and play happen at different timezone settings, data will be corrupt
1.02.001	<p>General functions</p> <ul style="list-style-type: none"> • Instrument occasionally suspends playing or recording unsolicited. • SW crashes for certain key combinations in recording filename entry. <p>ARB</p> <ul style="list-style-type: none"> • The ARB sample counter only starts counting after a previous streaming session has been executed • ARB session must be followed by "Set to Default", else next recording session records corrupted data. <p>Record</p> <ul style="list-style-type: none"> • Last two blocks of a recording session occasionally contain zeroes or invalid data • Recording at slow sample rates can run into timeout on STOP • Recorded sample rate written to file header occasionally wrong. • Recording under the same file name is no longer possible when a previous recording under that name occupies the entire space on the memory pack. The instrument reports an "Insufficient disk space" error in that case. <p>Info Interface</p> <ul style="list-style-type: none"> • If the source or destination device doesn't support the I/Q info interface than the name of the devices will be not displayed (e.g. TSMW, SFE)
1.01.002	initial version

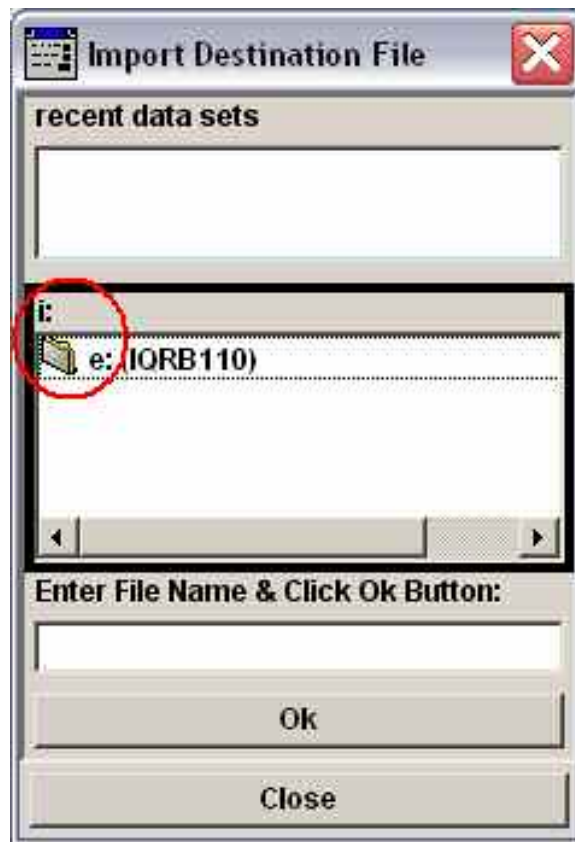
6 Known Problems

The following table lists the known problems in firmware version 1.04.006

Version	Function
1.04.006	<p>Instrument start</p> <ul style="list-style-type: none"> Internal hardware detection at FW start fails occasionally. Restart the instrument. on screen keyboard occasionally shows up on FW start. You might close it with by tapping the X in the upper right corner. <p>General functions</p> <ul style="list-style-type: none"> Text input in the file manager and save/recall dialog needs an external keyboard After input of text or numbers always press ENTER. Then tap OK (this is also needed for the on screen keyboard) File select box occasionally initialises with wrong drive letter. Always confirm drive letter selection by watching the drive letter (see screenshot below) Files recorded with versions before 1.03.001 can not be exported in raw format <p>Trigger</p> <ul style="list-style-type: none"> Recorder continuous trigger mode removed Trigger source DIG IQ GP for recording not implemented Gated Trigger only runs a REC / PLAY after the first active edge and until the first inactive edge. Player data is corrupt after the first retrigger pulse in retrigger mode at speeds > 1MSa/s The PLAY or REC buttons are inactive when the trigger source is set at EXTERNAL or IQ LEVEL trigger. <p>Player / ARB</p> <ul style="list-style-type: none"> after a ARB session always reset configuration to default to avoid various problems. ARB occasionally needs two taps to PLAY, PAUSE, and STOP keys <p>Player / Streaming</p> <ul style="list-style-type: none"> playback of short files at high sample rates in single trigger mode (playback time less than 5 seconds) may result in continuous playback or does not stop after the first playback cycle. Playing rarely stops in single trigger mode after short time (<2 seconds) Player very rarely plays corrupted data. <p>Option IQR-K103</p> <ul style="list-style-type: none"> if streaming playback switches to another data file with no GPS meta data, the old track will still be active. Close the map application and reopen to delete the track.



File selection : Take care on the drive letters. Occasionally, the initial drive letter is wrong in the file selection dialog box. You might see for example the following import destination file dialog.



If you would enter a file name now and confirm entry with ENTER key, the file would be written to drive i: instead of drive e:

Solution :

Tap the e: (IQRB110) to select drive e: The i: shall change to e:.. Then enter a file name in the line below, and press ENTER to confirm the file name.

7 Contacting Customer Support

For queries regarding technical aspects of our products, contact our customer support at <http://www.customersupport.rohde-schwarz.com>.

Contact information is also provided on the documentation CD-ROM.